



DrupalCon

EUROPE 2021
OCTOBER 4-7





DrupalCon

EUROPE 2021
OCTOBER 4-7

Migrate for recurring data import

Lessons learned and tales from the trenches

arthur@webstanz.be

adelson@webstanz.be



Speakers



Manages sync of a million records on a daily basis

arthur@webstanz.be



Deals with the unmanageable

adelson@webstanz.be



```
>Hello world!
```

```
>_
```

Drupal Migrate is a developer's tool !

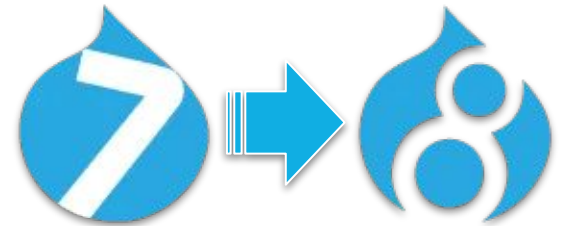


Migrate Module

Originally developed to

- perform complete site migration
- facilitate Drupal 7 upgrade to Drupal 8/9

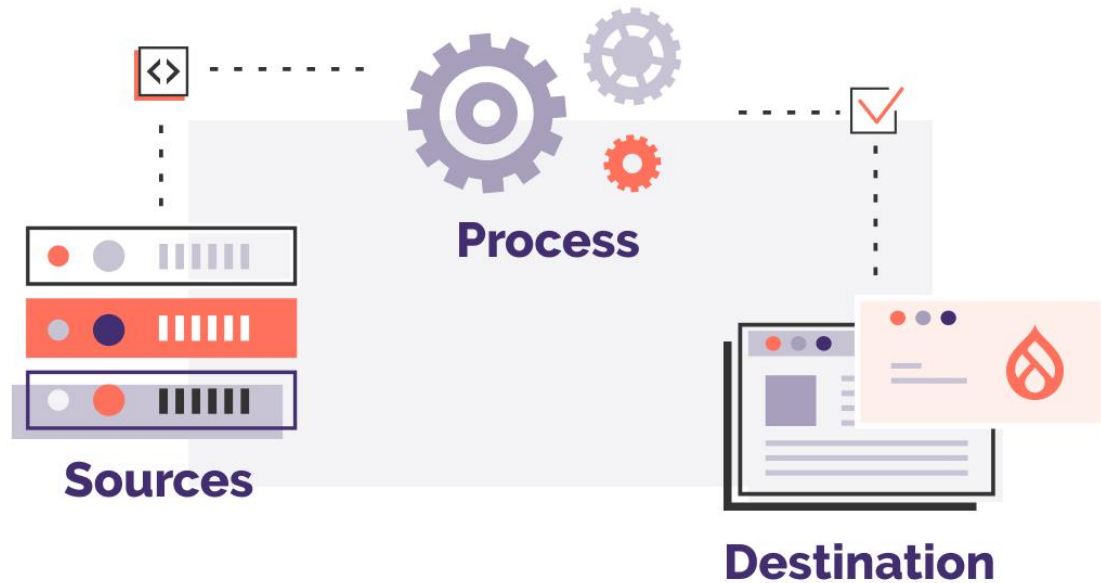
Drupal™





Migrate API

Flexible framework for migrating content into Drupal
from any sources



Our journey with Migrate

Data integrity
Scheduling migration execution
Logging, alerting, reporting
Partial import / Partial update

Data integrity



How to NOT import corrupted data ?

- Use Process Plugins to check the incoming data
- Try custom Process Plugins
- Use `MigrateSkipRowException`

Writing a process plugin | Migrate process plugins | Drupal Wiki guide on Drupal.org
<https://www.drupal.org/docs/8/api/migrate-api/migrate-process/writing-a-process-plugin>



Sanitize your data prior to synchronization

If you don't, you should probably backup your database **before** running Migrate 😬😬

- entity validation on destination plugin
- `skip_on_value` & `skip_on_empty`
- `static_map` & `default_value`
> failsafe against unexpected values



Good to know

If your endpoint data source is poor quality
you might consider extending the source plugin in order to
filter out rows

9:00am Start work

6:00pm Finish work

Scheduling migration execution

A close-up photograph of a red emergency stop button on a control panel. The button is circular and mounted on a black base. It is surrounded by blue labels with white text. The text on the labels includes "00", "No time to waste ?", "OWANIE", "NST IWS", and "PHS-MT". The background is slightly blurred, showing more of the control panel.

00

No time to waste ?

A close-up photograph of a red emergency stop button on a control panel. The button is circular and mounted on a black base. The panel is light blue with various labels in Polish, including 'ZAWIESZCZENIE' (Emergency Stop), 'INSTALACJA' (Installation), and 'ZAWIESZCZENIE' (Emergency Stop). The background is slightly blurred, showing other parts of the panel.

01

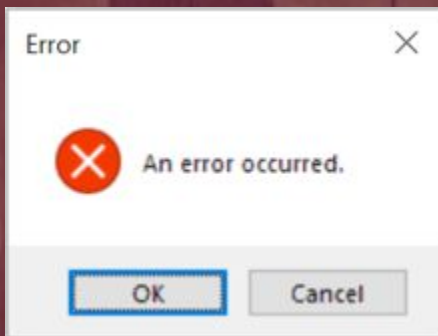
**Launch migration
over night**

02



...8 hours later...

02



...8 hours later...

RESET

MIGRATION IS BUSY...

```
drush migrate:reset-status <migration_name>
```

```
drush mrs <migration_name>
```



3 ways to execute scheduled migrations

1. use Drush with a regular cron job
 - > preferred method
 - > straightforward
2. use hook_cron or similar
3. use a module (e.g. migrate_scheduler)



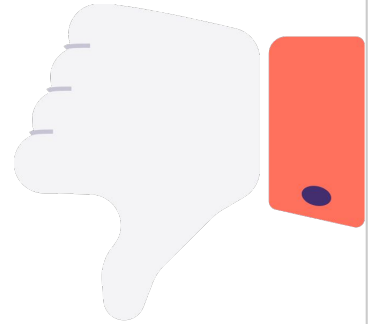
A background image showing a hand in a brown leather glove breaking a glass cover on a red fire alarm pull station. The station is mounted on a wall and has the text "IN CASE OF FIRE BREAK GLASS" printed on it. The entire image has a semi-transparent dark red overlay.

Logging Alerting Reporting



How to be alerted when things go south ?

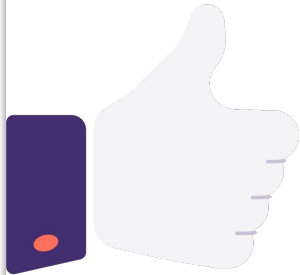
- Wait for client's panicked calls
- Custom Sensors (monitoring module)
- ?????





Garbage in - Garbage out

Because shit happens, be prepared to report !



- Output of the cron jobs and migrate messages
- Log process plugin
- Keep a copy of the source data for debugging



Error reporting example

Adding a custom feature : email report

Needs

- A simple emailable report
- Every type of error
- Explicit error messages
- One email for every daily imports

Result

Product Feeds Report

There are some errors :

Error Code	Sample Message	Number of Occurrences
FATAL ERRORS		
Fatal error in Sample1_nl_products : Sample1_nl_products migration failed.		
Fatal error in Sample1_en_products : Sample1_en_products migration failed.		
Fatal error in Sample2_en_products : Sample2_en_products migration failed.		
Fatal error in Sample2_fr_products : Sample2_fr_products migration failed.		
Sample3_nl_products		
75	Brand value " is not a string text.	20
Sample1_nl_products		
73	Value '0' is not bigger than 0.	47
75	Brand value " is not a string text.	2212
77	No suitable values for image URL found.	486
79	Given Id 'AT-5570-35' already exists.	164
Sample5_nl_products		
77	No suitable values for image URL found.	1190
79	Given Id '33897' already exists.	20
Sample4_en_products		
71	No text found in source towards destination 'title' and no default value provided.	6577
Sample6_fr_products		
71	No text found in source towards destination 'title' and no default value provided.	6577

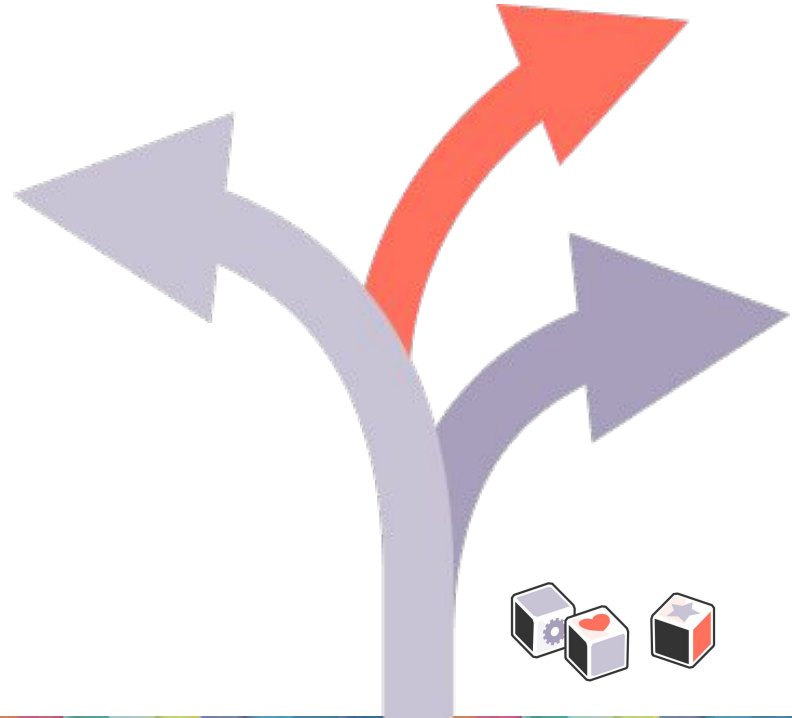
© Sample

Partial import
Partial update



How to update conditionally or a subset of records only ?

- **--update drush flag**
 - when you want to update everything
- `high_water_property` in the source plugin
 - when you have a “last modified” field
- `track_changes` in the source plugin
 - when you don't have it or it's not applicable
- **--sync drush flag**
 - when you want to rollback items not in the source anymore



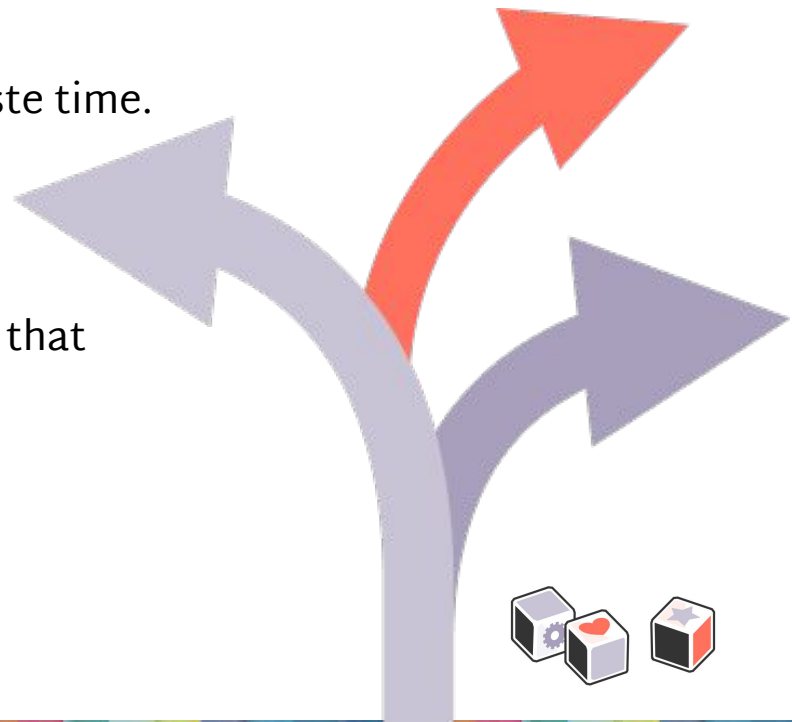


Avoid importing data that already exists!

When importing millions, you can't afford to waste time.

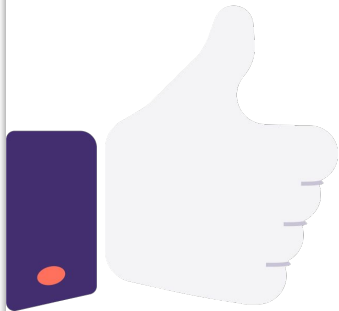
Use the `track_changes` feature to exclude data that has already been imported

- Implement skip using source hash
- Compatible with sync





You probably should use migrate if...



- Having regular entities is important
- The requirements are somewhat open ended and you plan on leveraging the migrate ecosystem (tooling, community support, ...)
- The asynchronous nature (no real time data fetching) of Migrate is an advantage or you don't care

Questions ?



DrupalCon

EUROPE 2021
OCTOBER 4-7

Join us for contribution opportunities

Online event

<https://drupalcontributions.opensocial.site>

General, Mentored &
Firsttime Contributor
Workshop

4th of October: 9:00 - 12:00

5th of October: 14:00 - 17:00

6th of October: 9:00 - 12:00

7th of October: 14:00 - 17:00

#DrupalContribution



DrupalCon
EUROPE 2021
OCTOBER 4-7

Want to know more about Migrate ?

Get involved & contribute !

Join the Drupal Migrate' Slack channel

A close-up of Leonardo DiCaprio in a tuxedo, smiling and holding a glass of champagne. The background is a dark, out-of-focus bokeh of light spots, suggesting a festive or celebratory setting.

Big shout out
to all contributors !



bit.ly/3mmqGLt



Thank you !

What did you think?

Locate this session at the DrupalCon Europe 2021 website
and take the survey for each session:

<https://events.drupal.org/europe2021/schedule/all>

Thank you!